



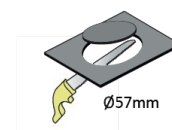
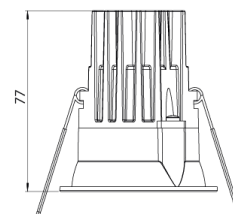
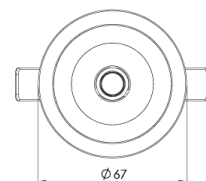
| | |
|-----------------------|--|
| Product Family | Taro |
| Adjustability | Fixed |
| Color | White- Black- Gray- RAL |
| Mounting Type | Recessed Mounted |
| Body | Die-cast aluminium body with electrostatic powder coated |

| | |
|------------------------------|--|
| Light Source | COB LED |
| Color Temperature | 2700-3000-4000-5000-6500K |
| Color Rendering Index | CRI>80,CRI>90 |
| Power | 7 W |
| Power Factor | Pf>90 |
| Luminaire Efficiency | 100lm/W |
| Light Beam Angle | 15°,24°,36° |
| Lumen | 700 lm |
| Operating Voltage | 220-240V AC / 50-60 Hz |
| Light Source Lifetime | 50.000 hours Led lifetime |
| Optic | High efficiency reflector and PC glass |

| | |
|------------------------------------|--|
| Control Type | On/Off – Dali |
| Electrical Insulation Class | Class II |
| Optional Features | Emergency kit system can be integrated |

| | |
|-------------------|--------------------|
| Sealing | IP20 - IP44 - IP65 |
| Weight | 0,35 Kg |
| Dimensions | Ø 67 x 77mm |

DIMENSIONS



Lumen value is given according to 4000K value.

Luminaire is F-marked and suitable for direct mounting on normally flammable surfaces.

All components are provided with 5 year limited guarantee. A qualified electrician must ensure proper installation of the product.